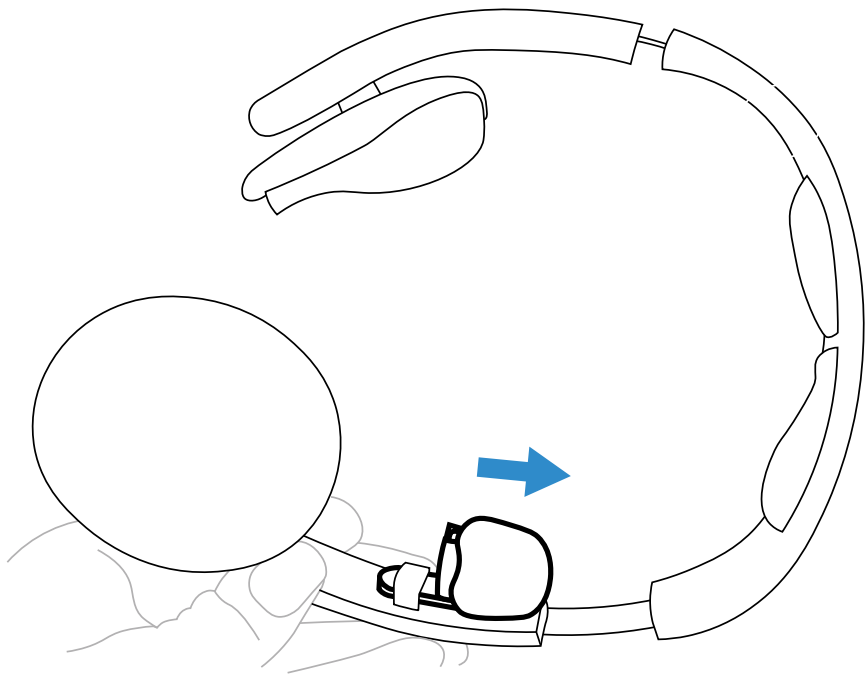
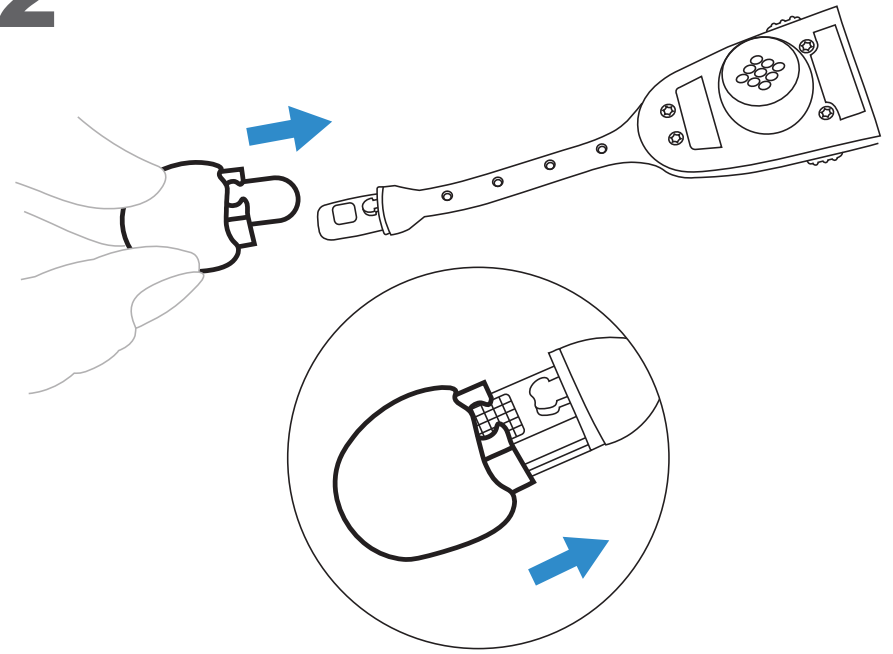


ASSEMBLING THE HEADSET

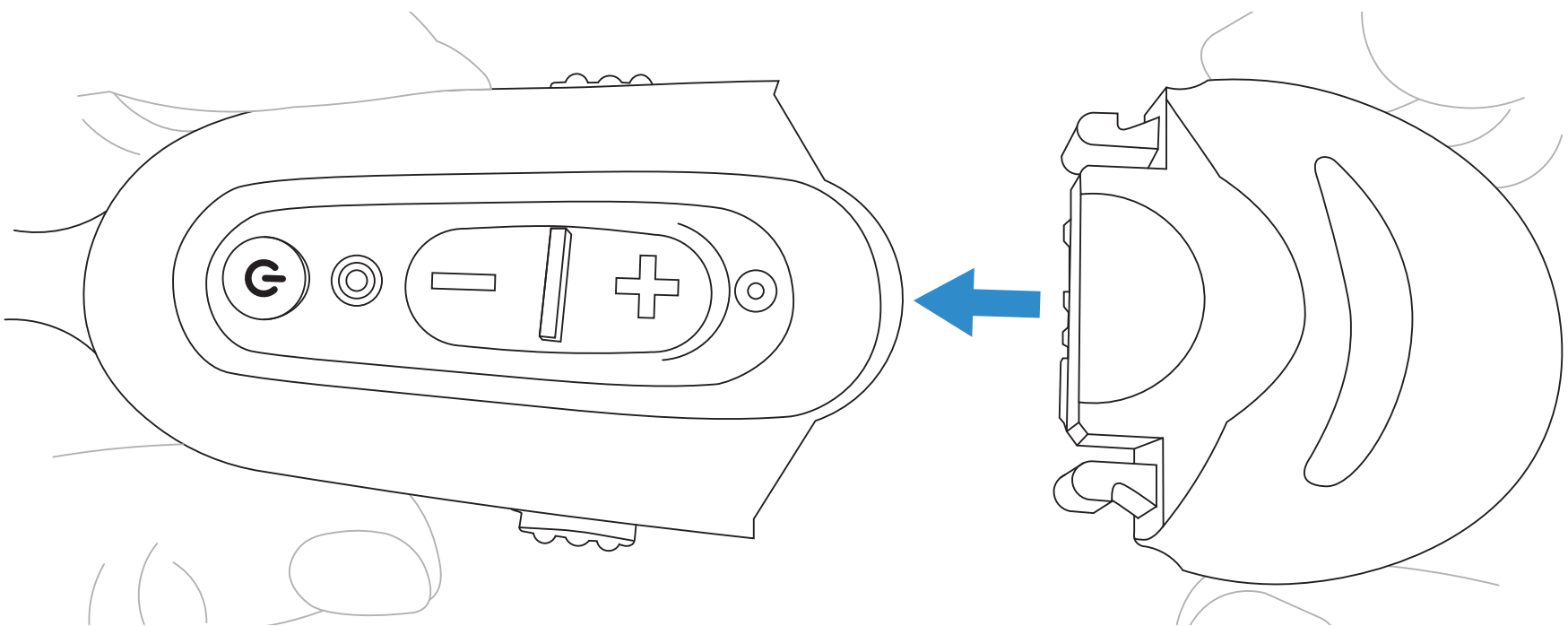
1



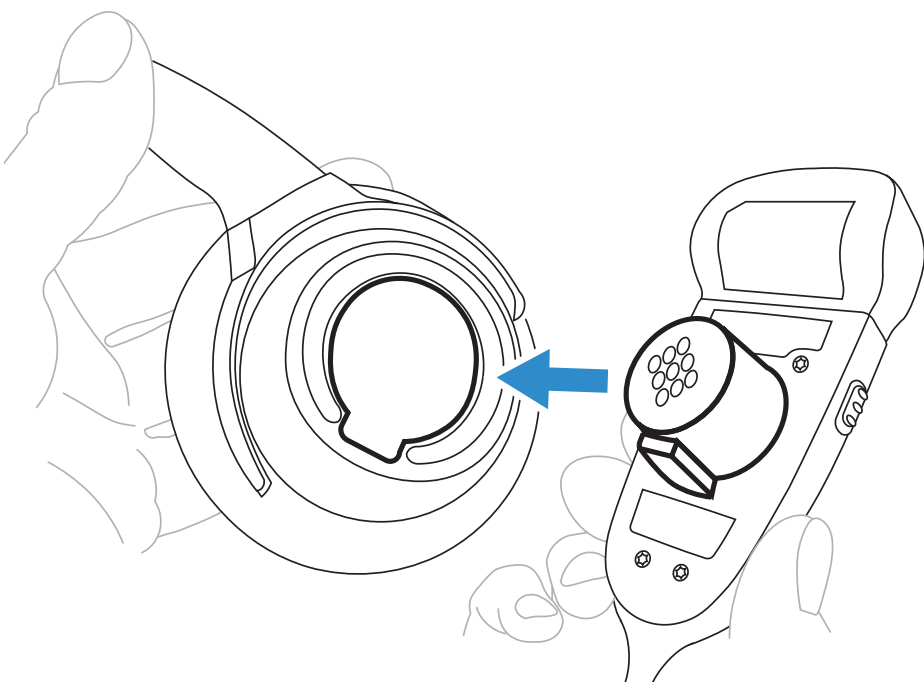
2



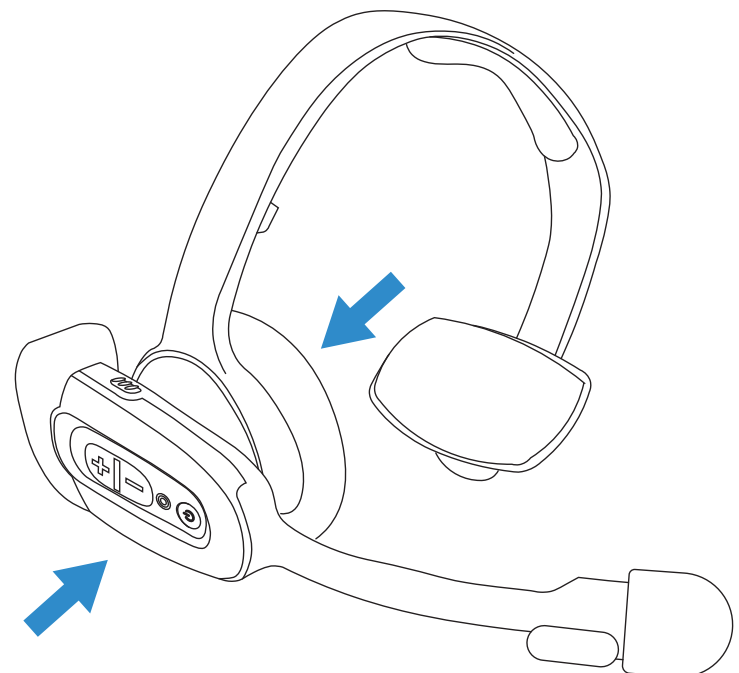
3



4

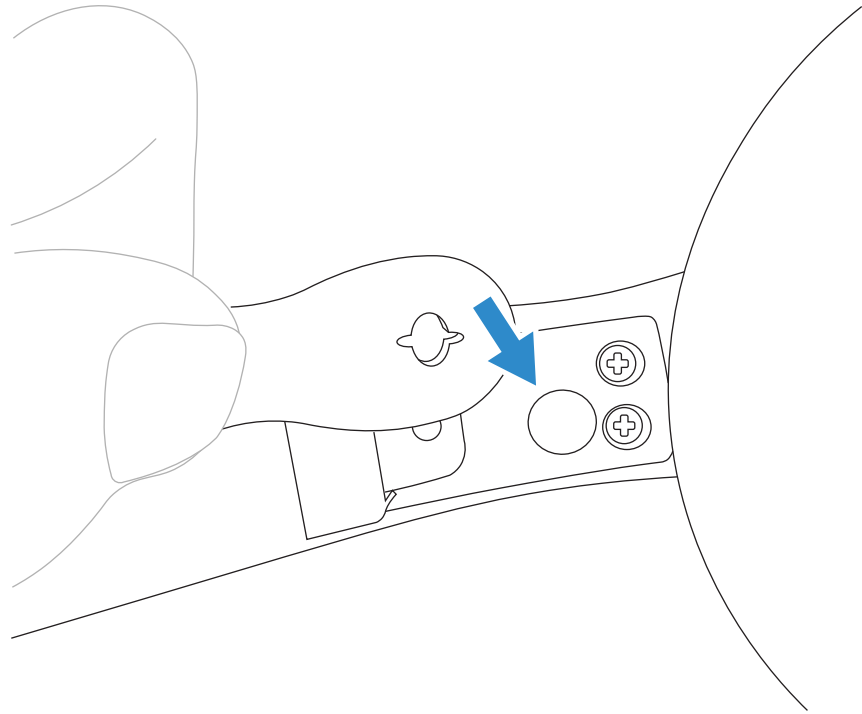


5

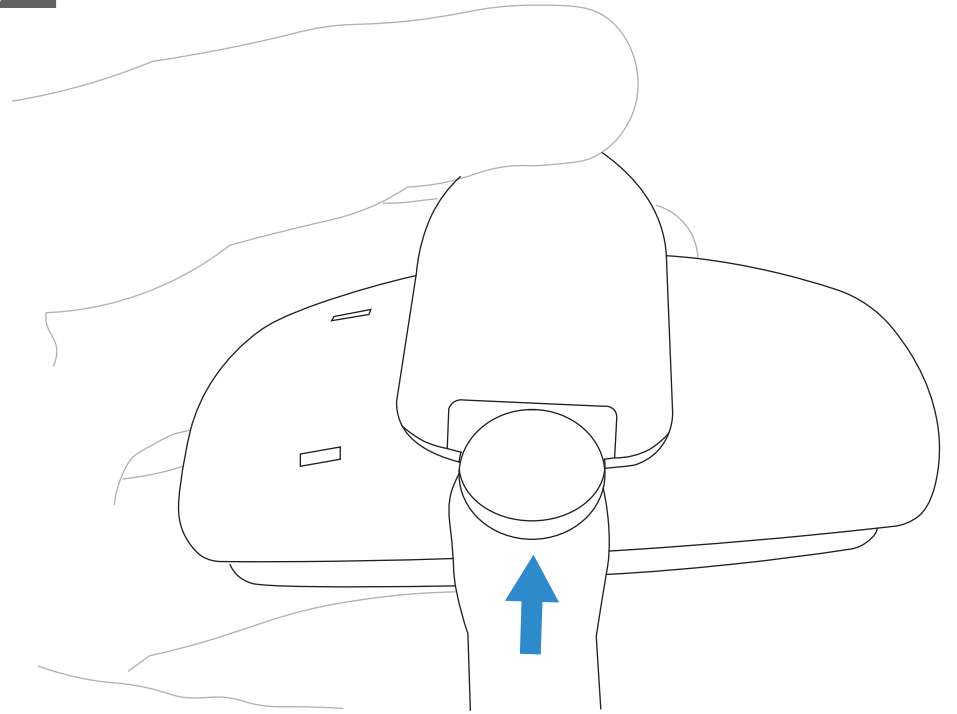


INSTALLING THE STABILITY STRAP

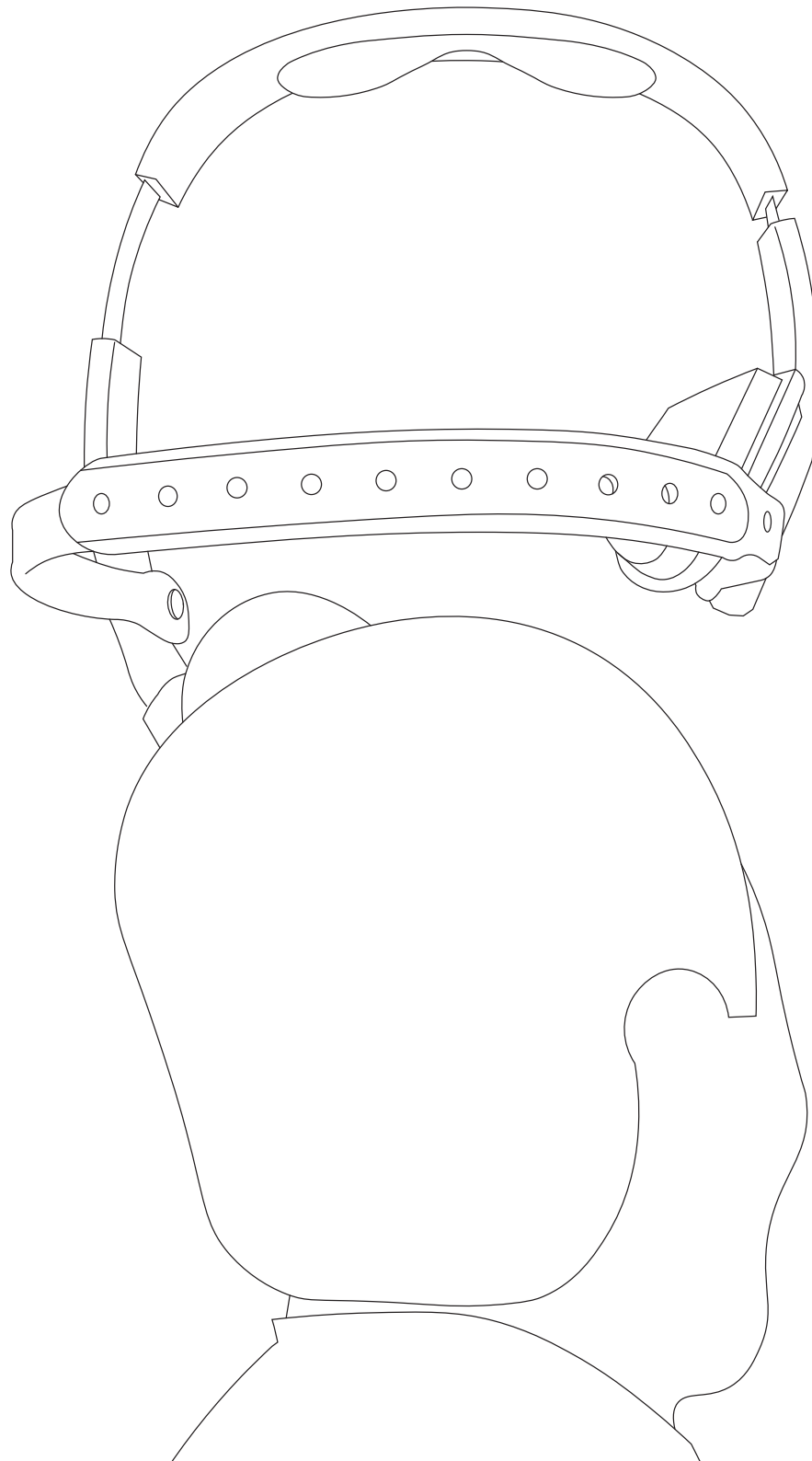
1



2

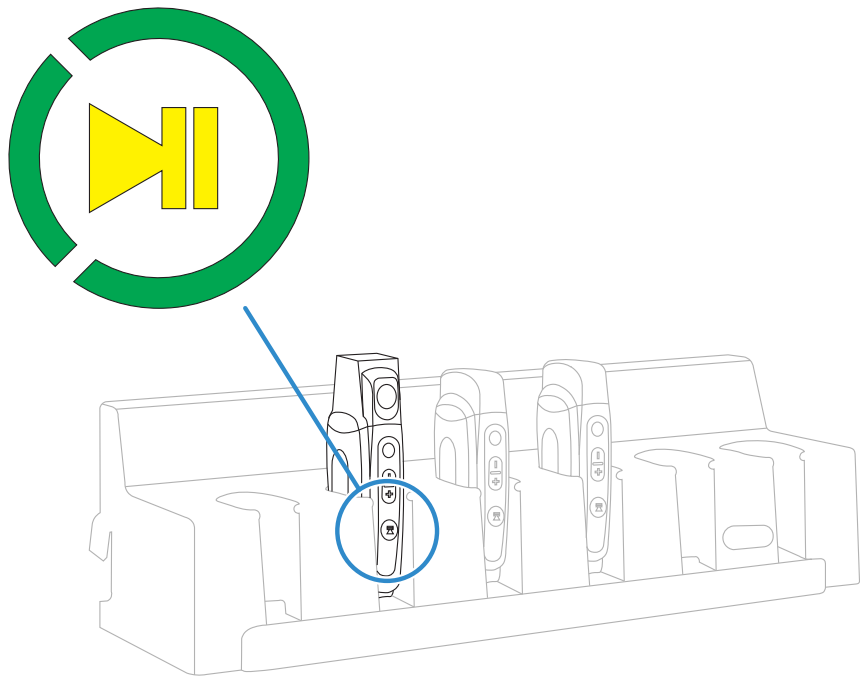


3

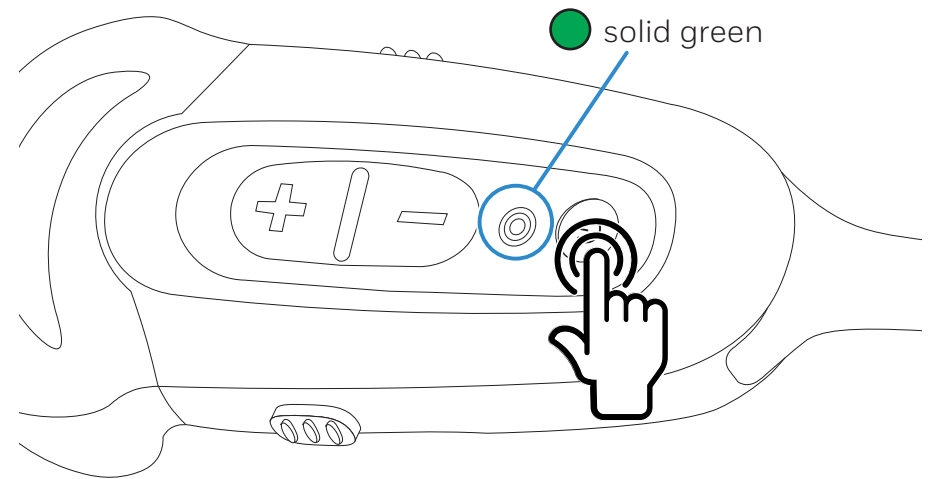


START A SHIFT - WIRELESS HEADSET

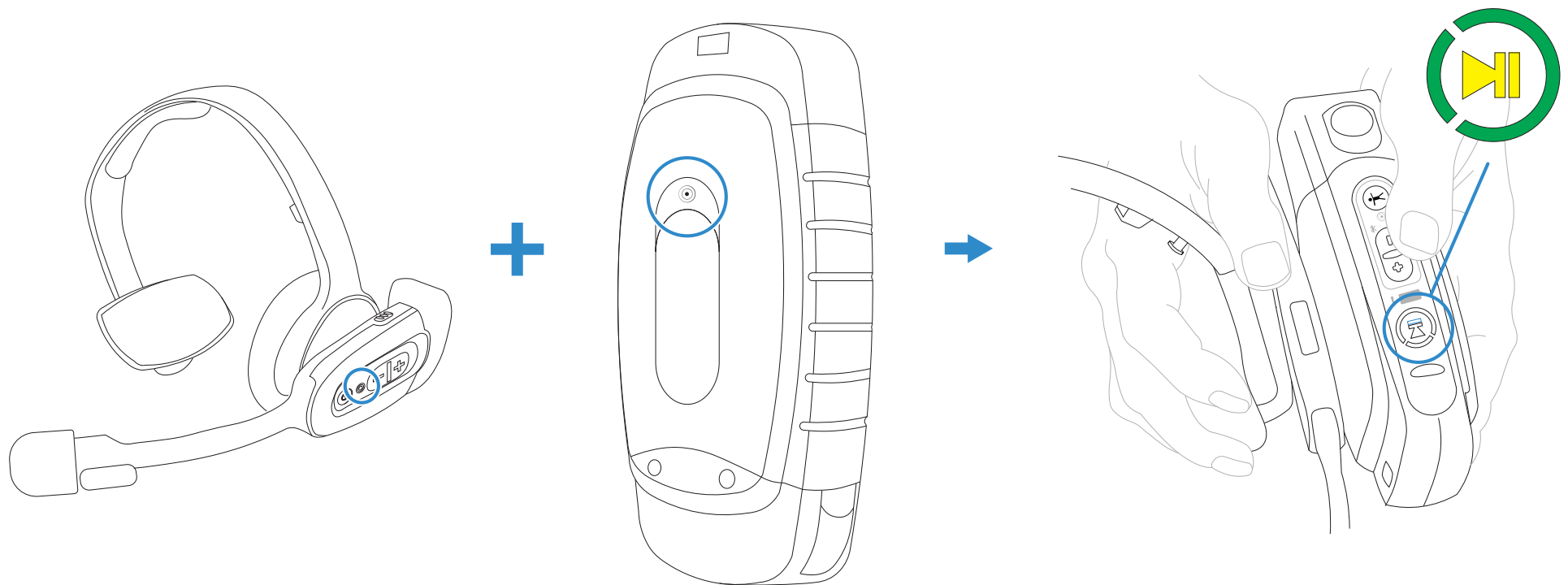
6. Select device



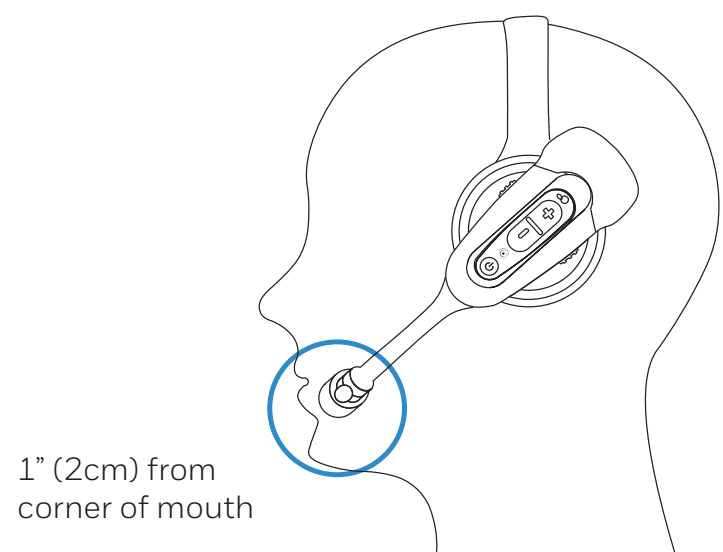
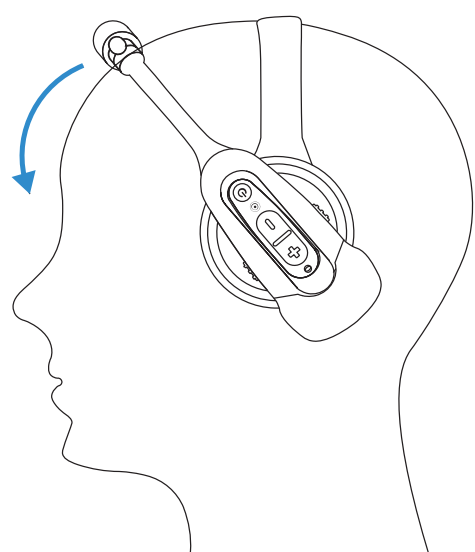
7. Power on SRX2



8. Touch electronic module to device at © symbol

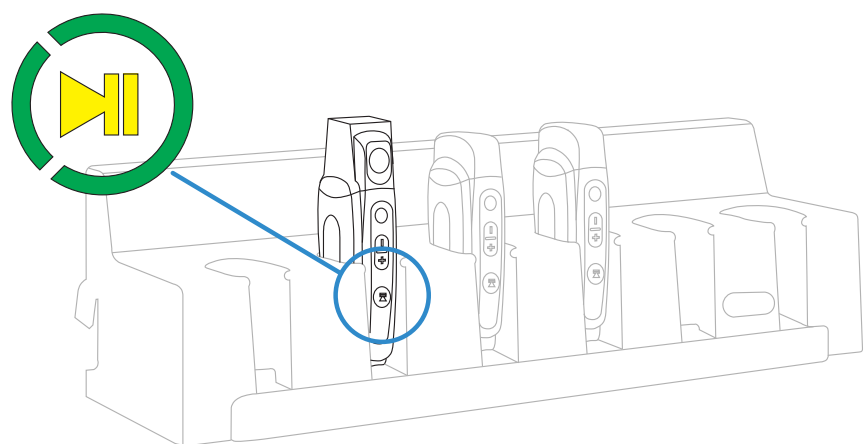


9. Put on headset and position microphone

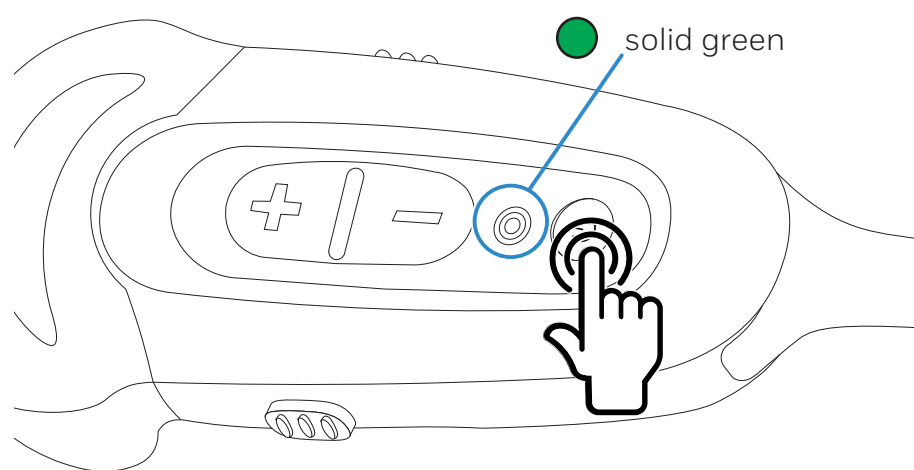


START A SHIFT - WIRELESS HEADSET

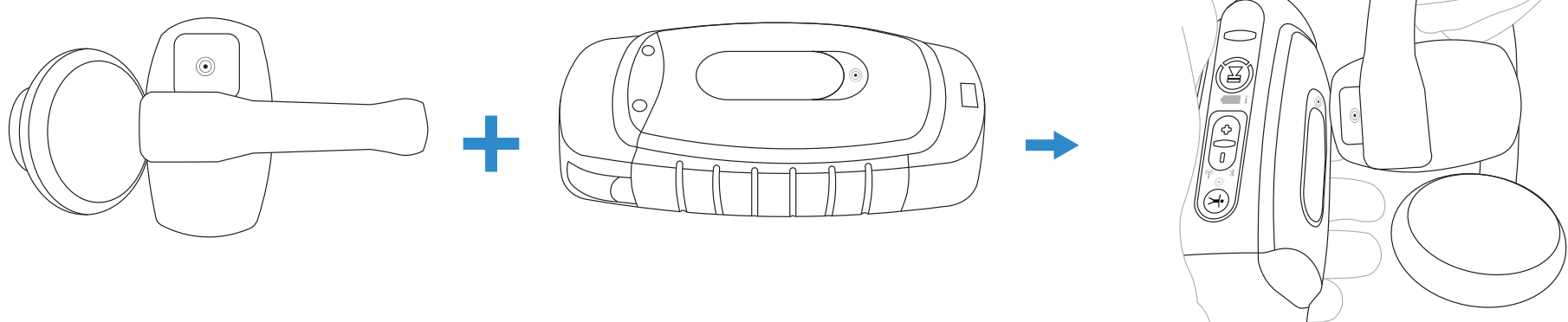
6. Select device



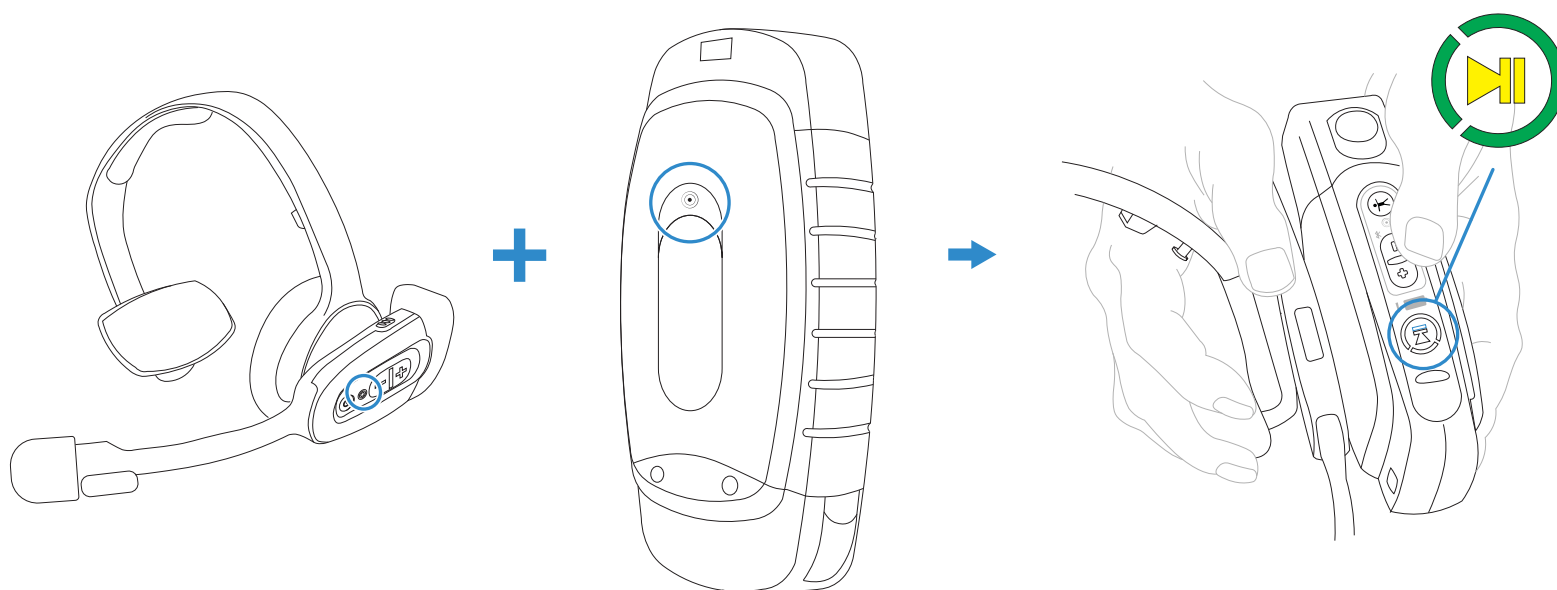
7. Power on SRX device



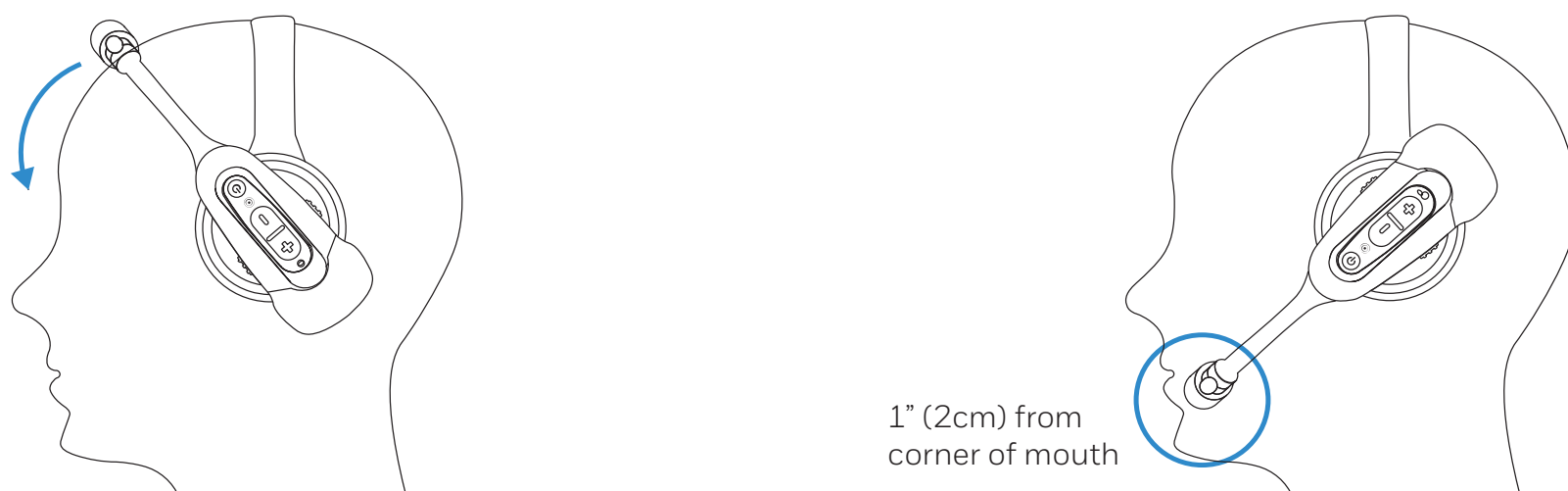
8. Touch headband to device at  symbol



9. Touch electronic module to device at  symbol



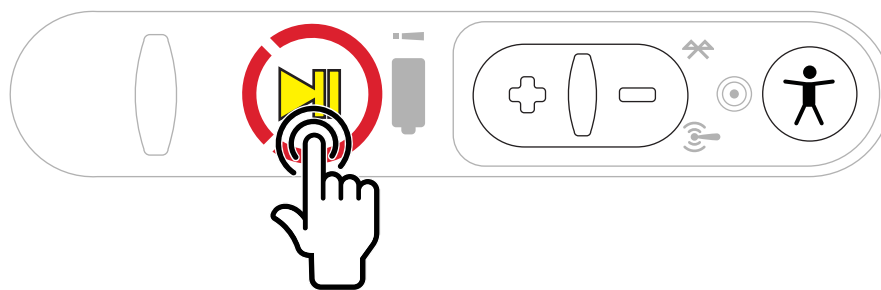
10. Put on headset and position microphone



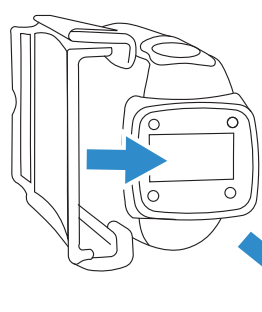
END A SHIFT - WIRELESS HEADSET

1. Power off device

Press and hold
Play/Pause until
LED rotates red



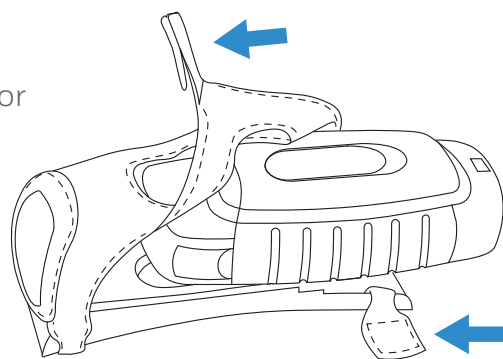
2. Slide device out of holster



A730

Pull device away from
you, sliding along clip

or

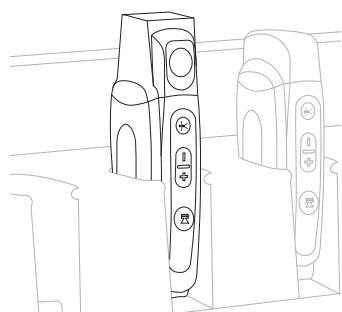


A710 or A720

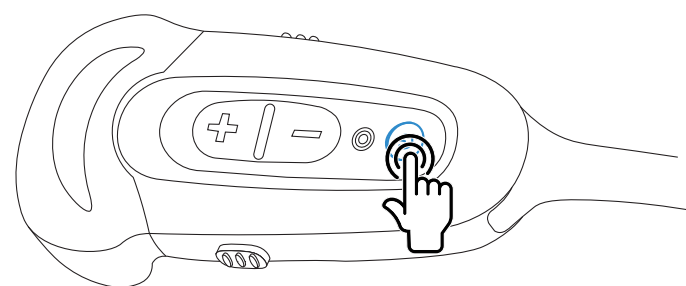
Open Velcro® and slide
device out

3. Insert into slot

Insert device with button
controls facing out and
Operator button on top

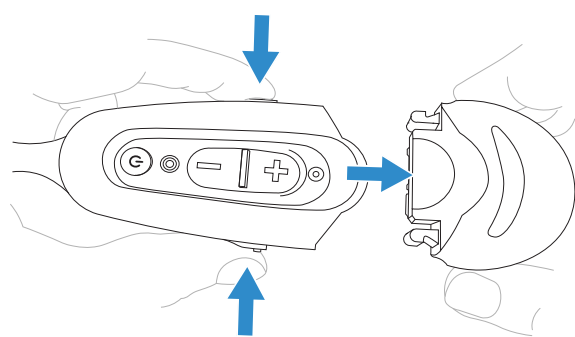


4. Power off headset

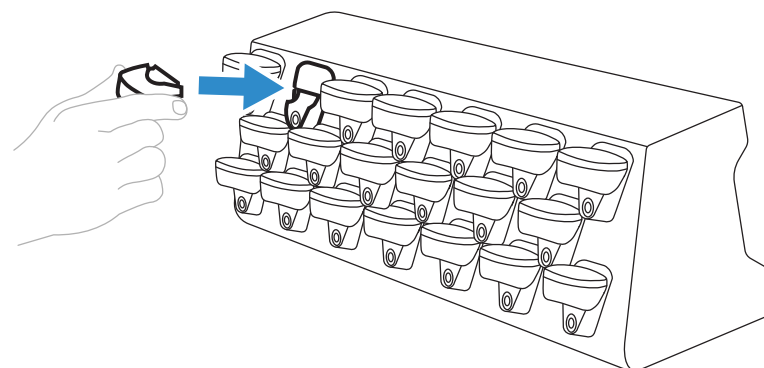


5. Remove battery

Squeeze battery
release buttons

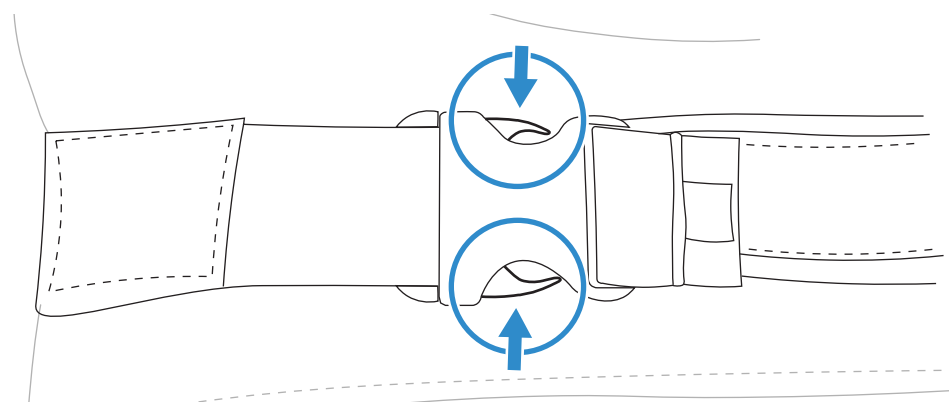


6. Place in charger



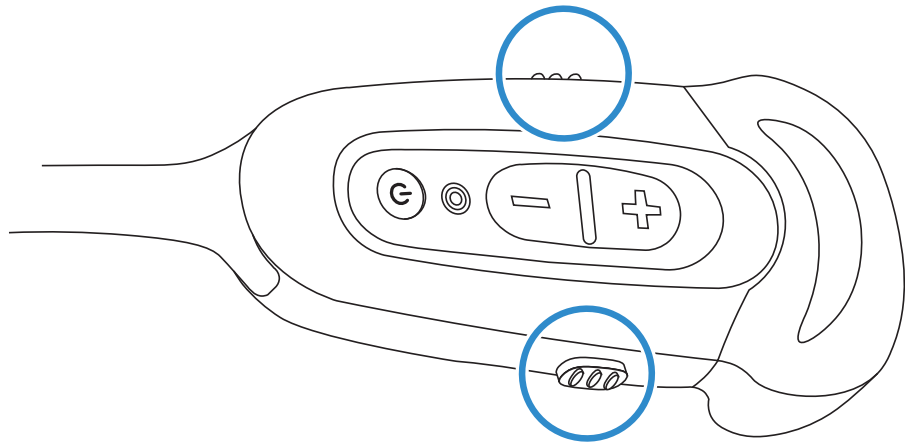
7. Remove belt

Release buckle

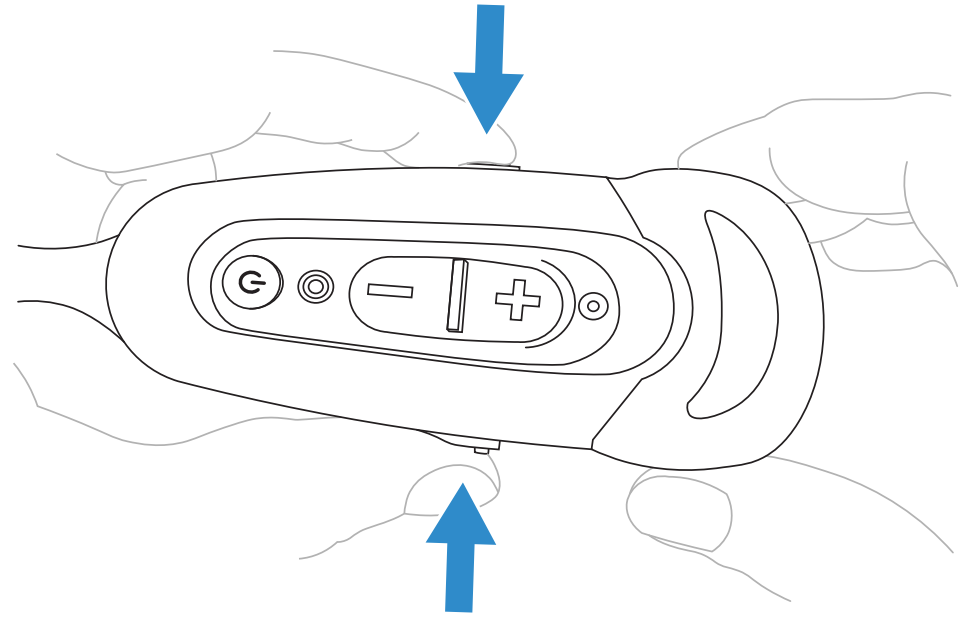


CHARGING THE HEADSET BATTERY

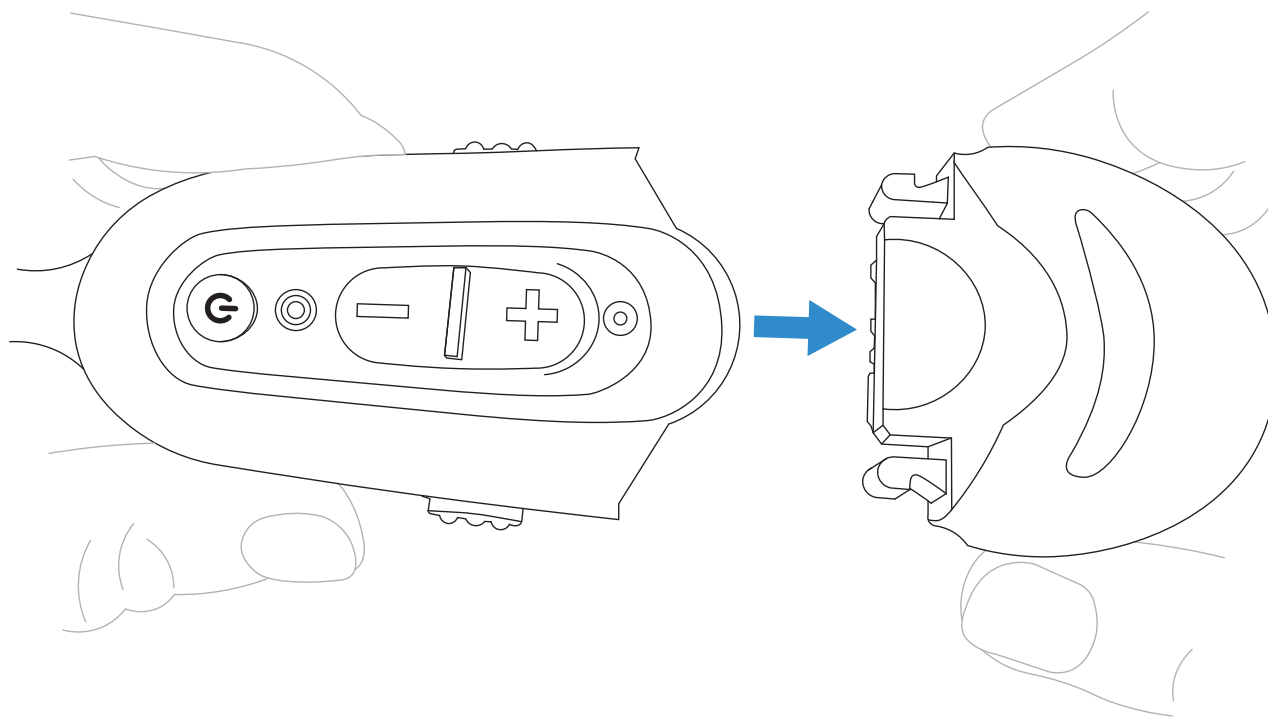
1



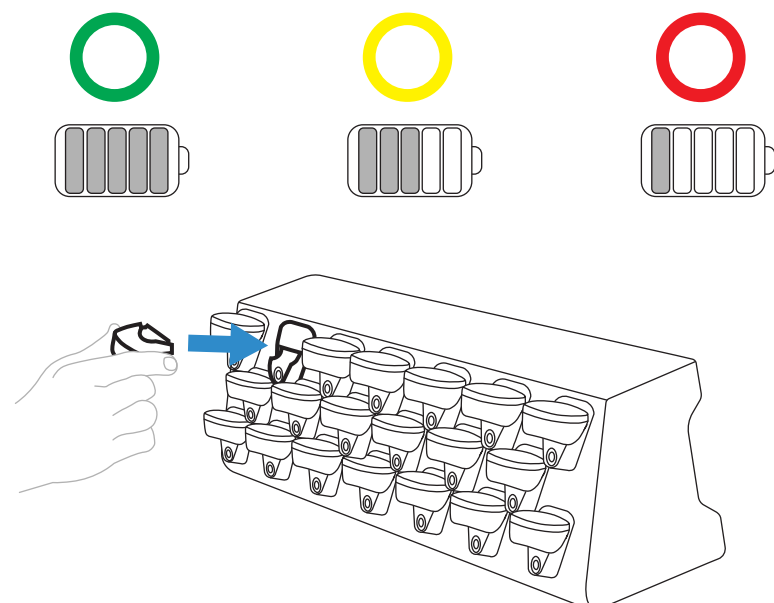
2



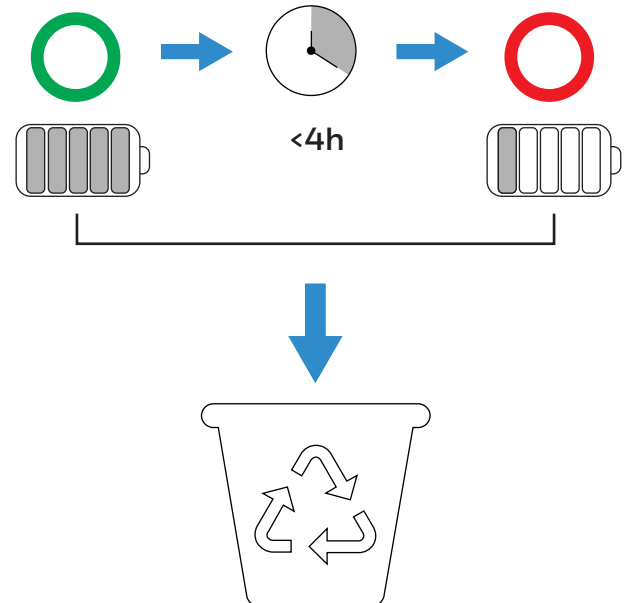
3



4

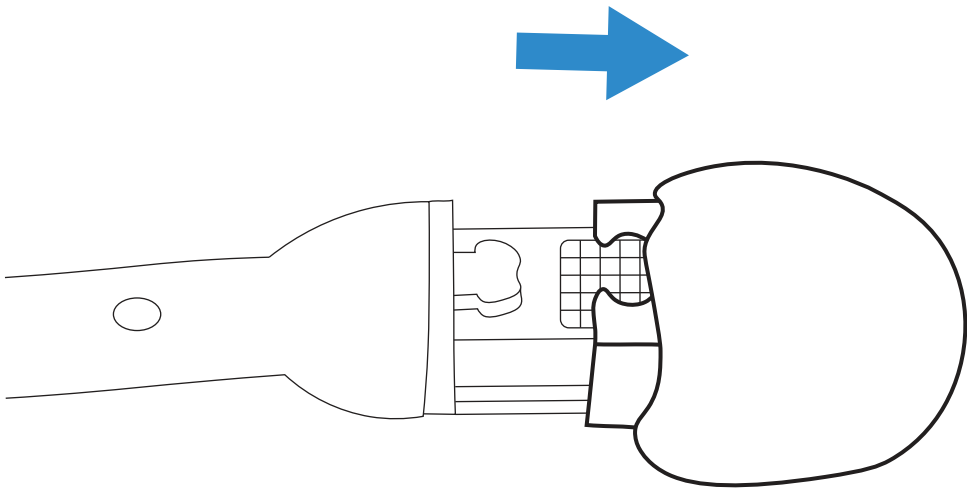


5

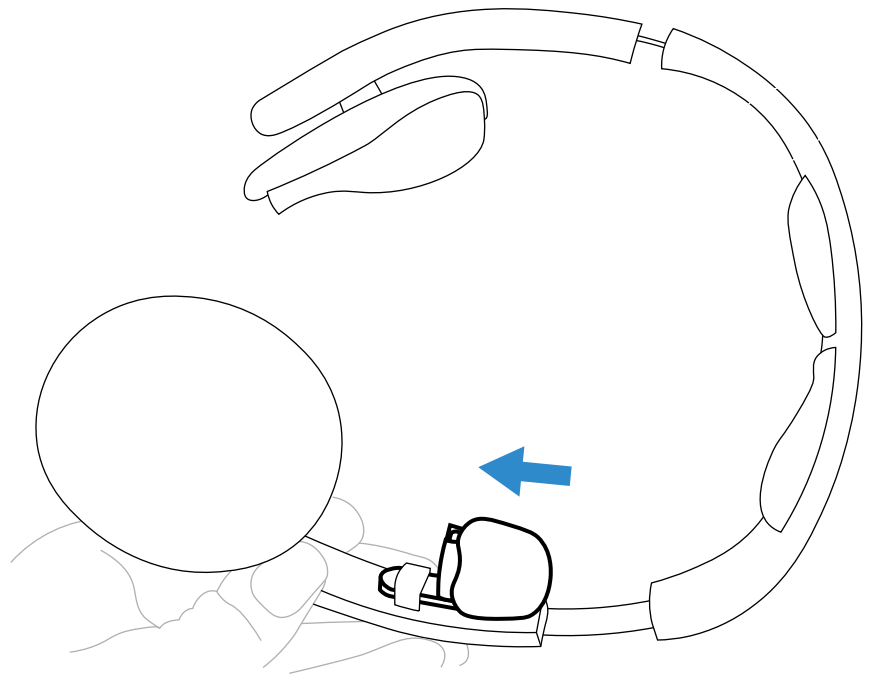


SHARING THE HEADSET

1



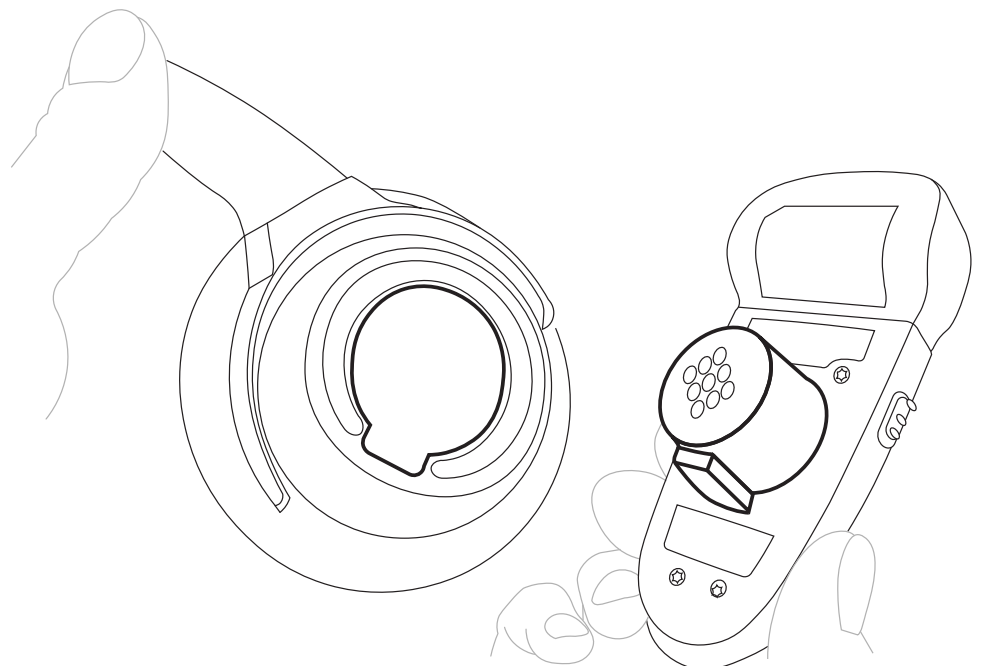
2



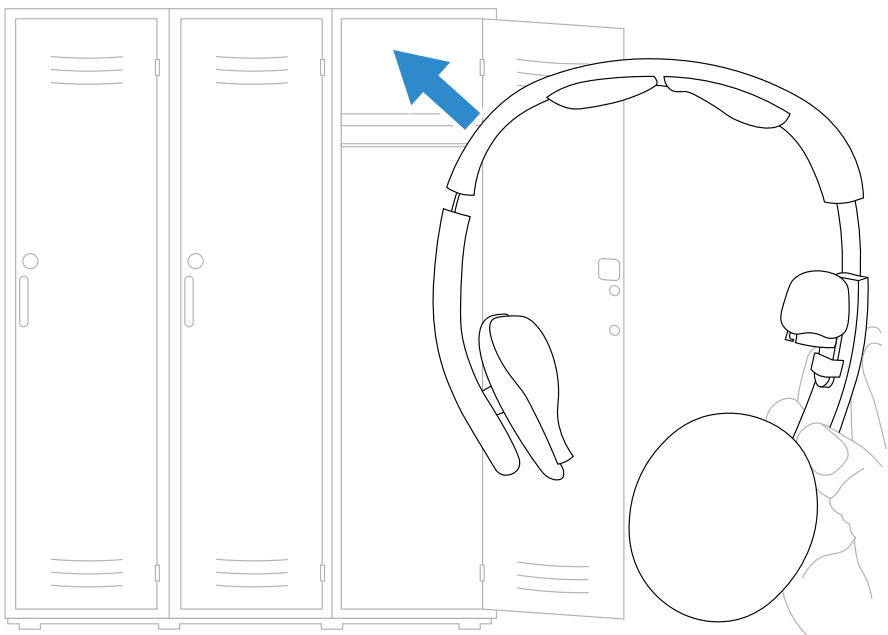
3



4



5



6

