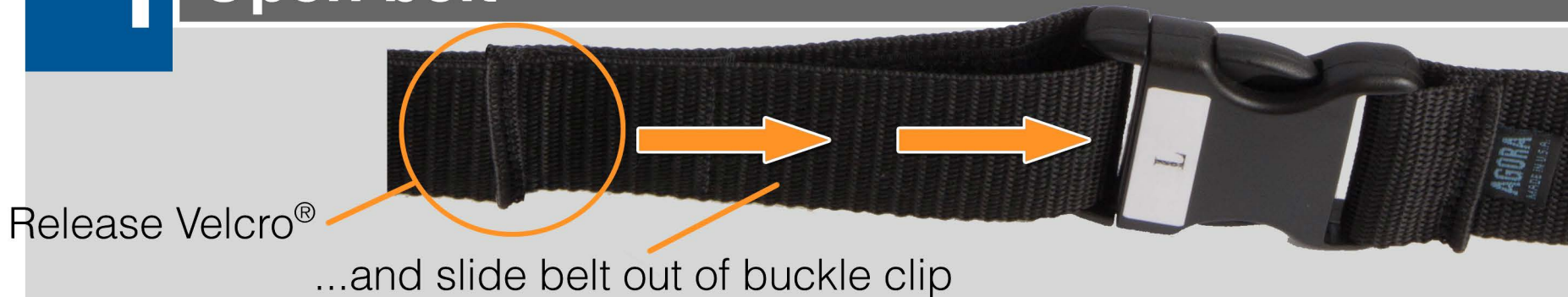


START A SHIFT - Prepare belt

1 Open belt

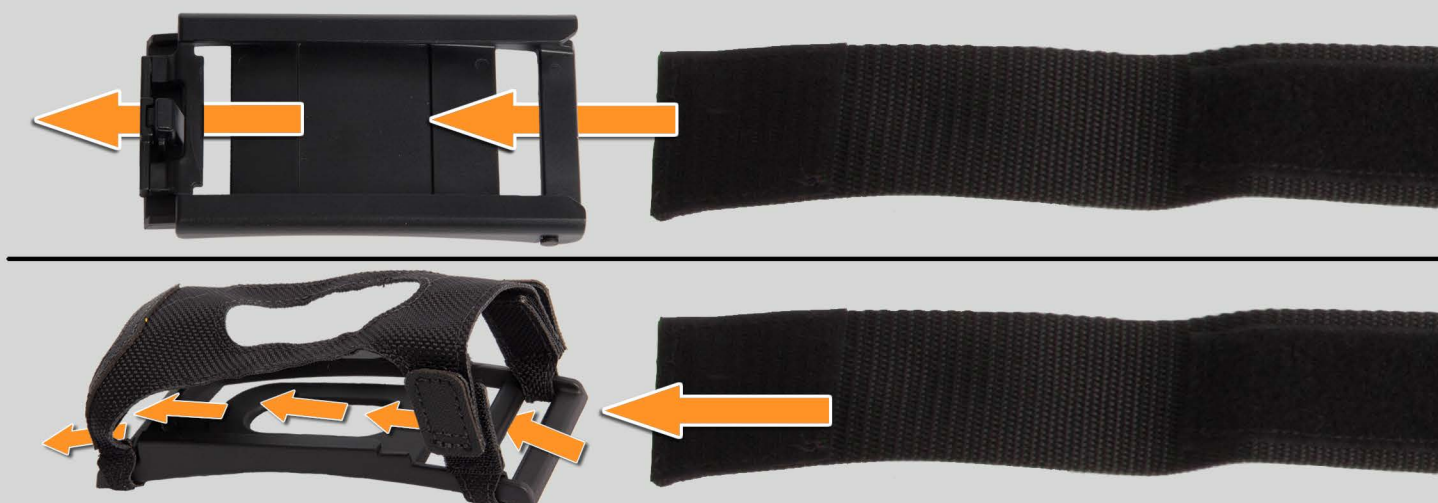


2 Slide the holster onto the belt

Talkman A730 holster

- OR -

Talkman A710/A720 holster



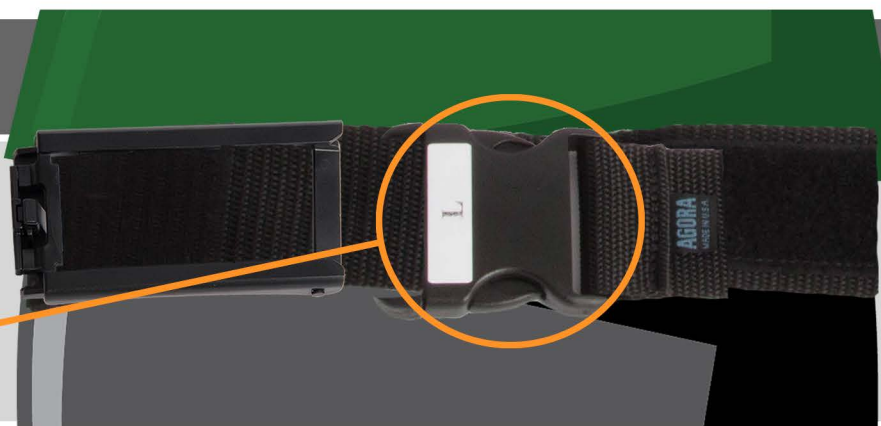
3 Close belt

Feed belt back through buckle



4 Put on belt

Release buckle, wrap belt around waist and click buckle ends together



5 Slide device into holster

Talkman A730

Align device slot runners with holster and slide until click



Talkman A710 or A720

- OR -

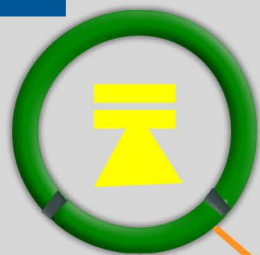
Adjust Velcro, slide in device and fasten Velcro



START A SHIFT - Wireless headset

for personal electronic modules

6 Select device



7 Power on SRX2



8 Touch electronic module to device at © symbol



9 Put on headset



10 Position microphone

1" (2 cm) from corner of mouth



START A SHIFT - Wireless headset

for shared electronic modules

6 Select device



7 Power on SRX2



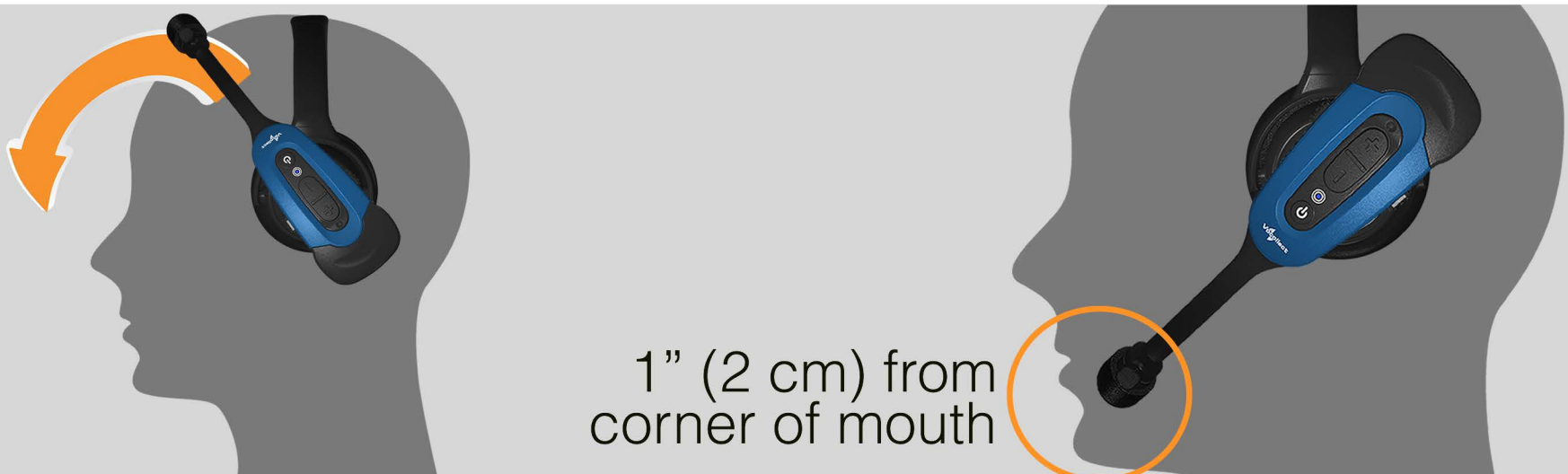
8 Touch headband to device at symbol



9 Touch electronic module to device at symbol



10 Put on headset and position microphone

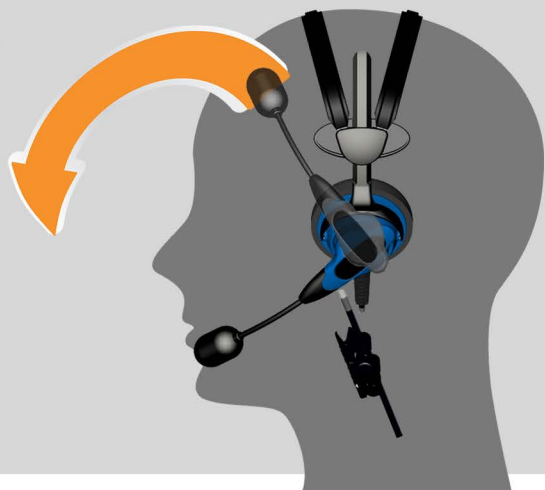


START A SHIFT - Wired headset

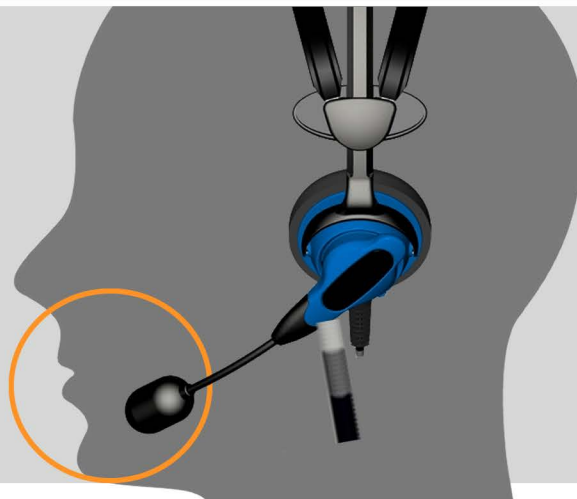
6 Select device



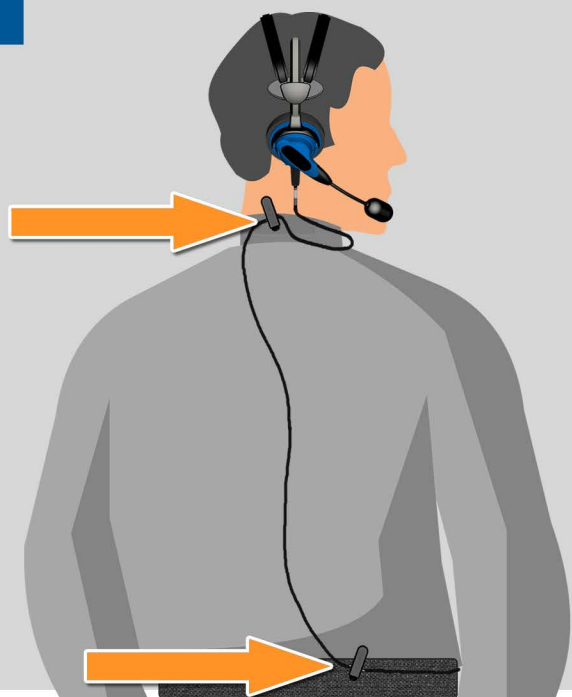
7 Put on headset and position microphone



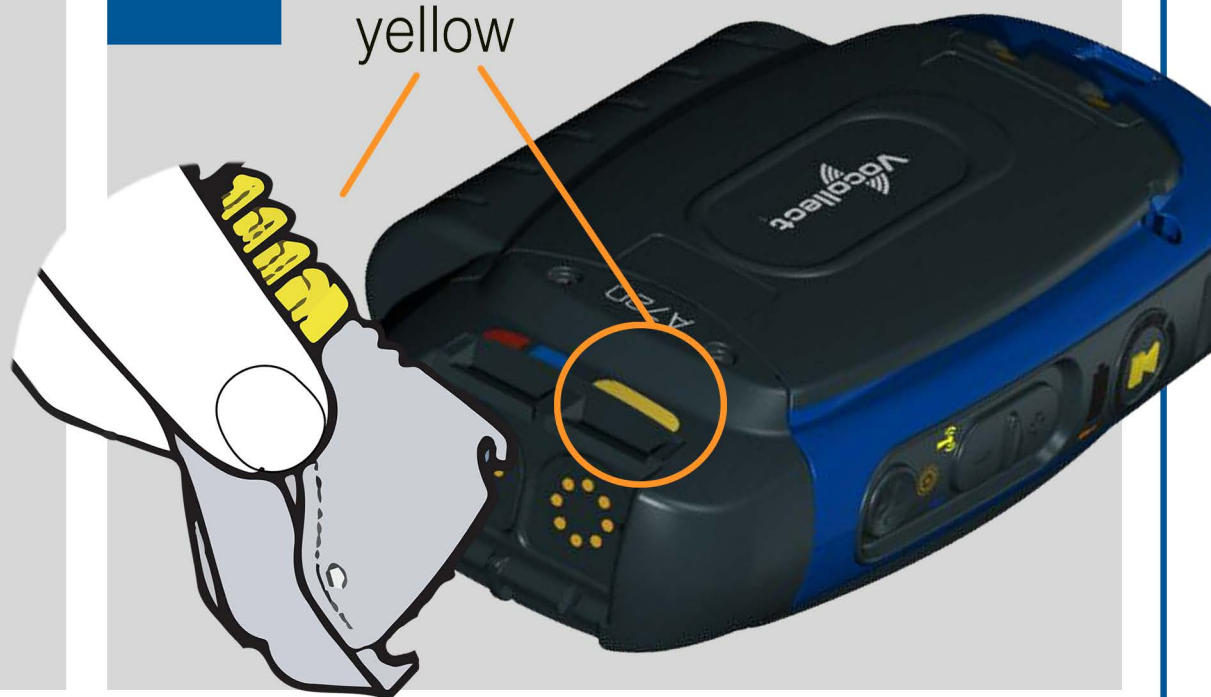
1" (2 cm) from corner of mouth



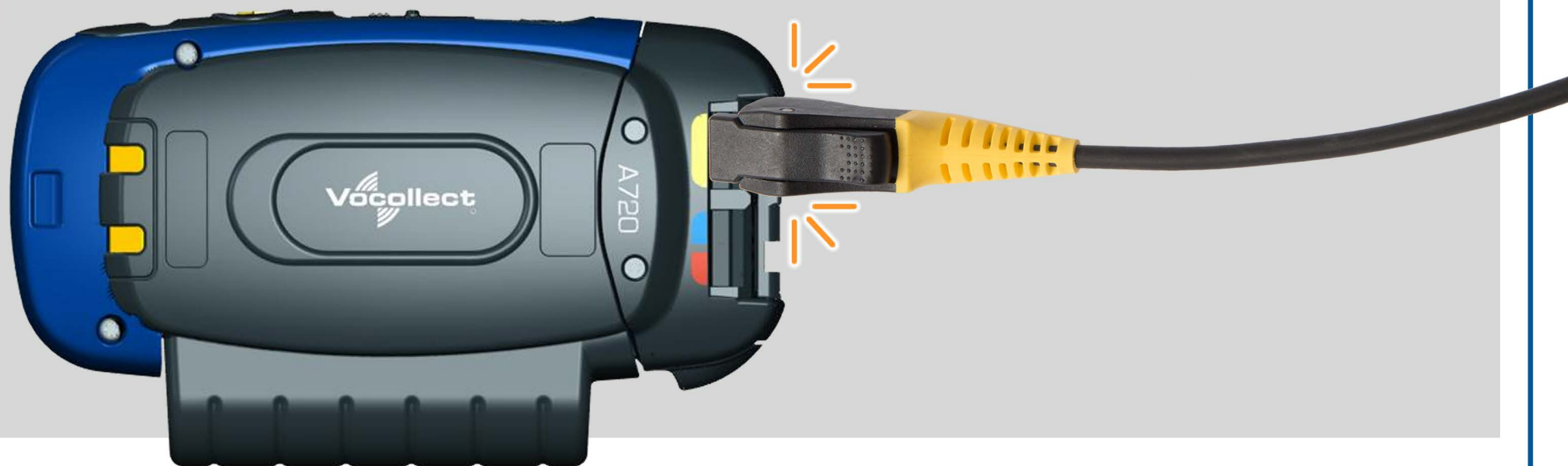
8 Fasten cable clips



9 Match port colors



10 Tilt connector toward device until it clicks



START A SHIFT – Sign On

11 Power on device



12 Press Operator

Confirm operator name



13 Press Play/Pause

Power on device



14 Do a noise sample

0, 1, 2
Ready



15 Confirm readiness

Ready



16 Say and confirm password



Password?

Correct?

Yes



If
needed

Change Operator

Press Operator button



Press + or - until "Change operator"



Press Operator button



Press + or - until you hear your name



Press Operator button



ADJUST FEATURES

1 Access the menu

Press Operator button



Current operator is _____.
Select menu item.

2 Press + or - button until desired menu item



Change pitch

Change speed

Change speaker

Change task

Change operator

3 Press Operator button to select menu item



4 Press + or - button until feature is adjusted



5 Press Operator button to confirm



TIP Press the Play/Pause button at any time to cancel the action.

DEVICE STATE INDICATORS

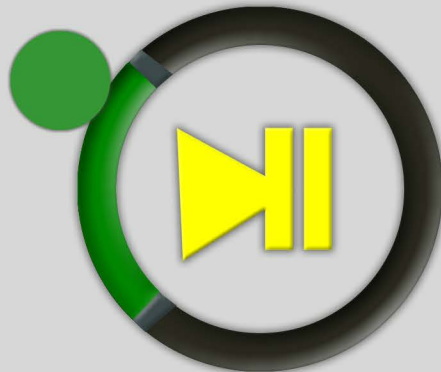
Device state indicator - out of device charger



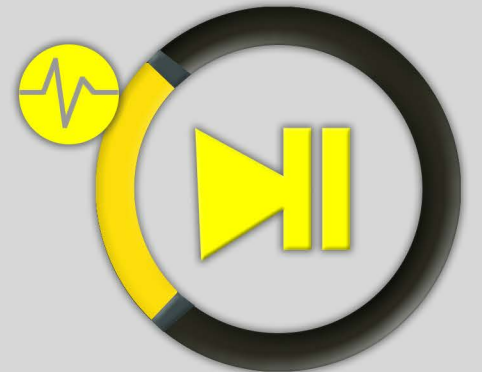
device state indicator



small segment green & pulsing
sleeping



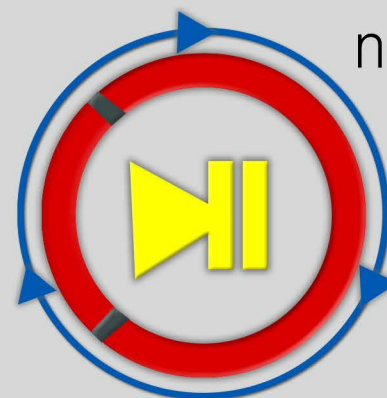
small segment green & solid
on



small segment yellow & pulsing
no task loaded



entire ring yellow & rotating
loading or starting



entire ring red & rotating
loading software or shutting down

Device state indicator - in device charger

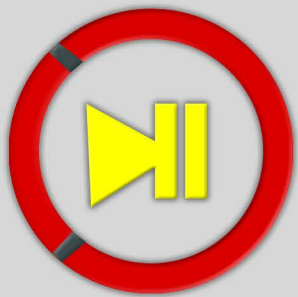
device state indicator



charging complete

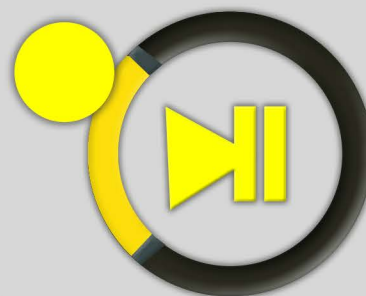


charging



charging fault

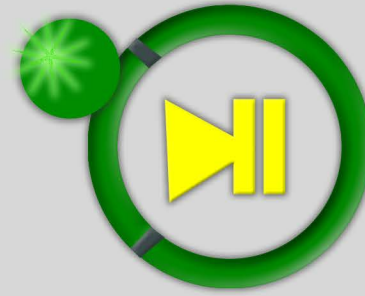
TouchConfig™



small segment yellow & solid
sender mode



large segment yellow & solid
receiver mode



entire ring, fast blink
TouchConfig successful



CHANGE BATTERY

1 Slide battery release button away from battery



2 Lift out battery




3 Place in empty slot



4 Pick charged battery



 green = fully charged

5 Insert pins-end first



END A SHIFT - Wired headset

1 Power off device



Press and hold Play/Pause until LED rotates red

2 Remove connector

Grasp connector, tilt bottom of connector away from device and lift up



3 Slide out of holster



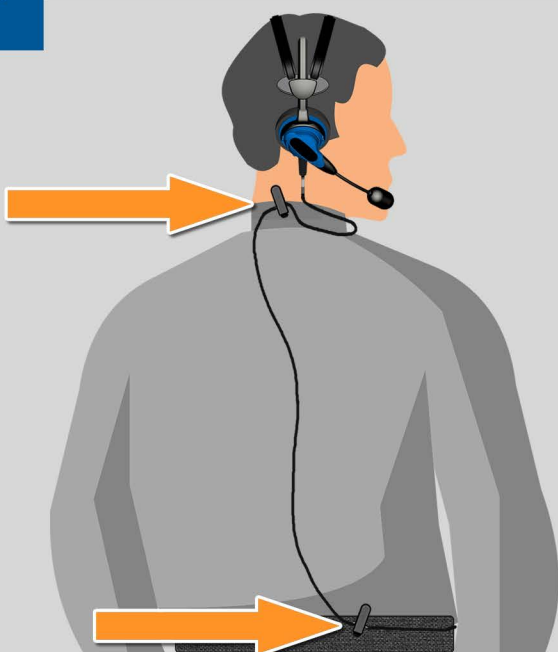
Open Velcro® and slide device out

4 Insert into slot

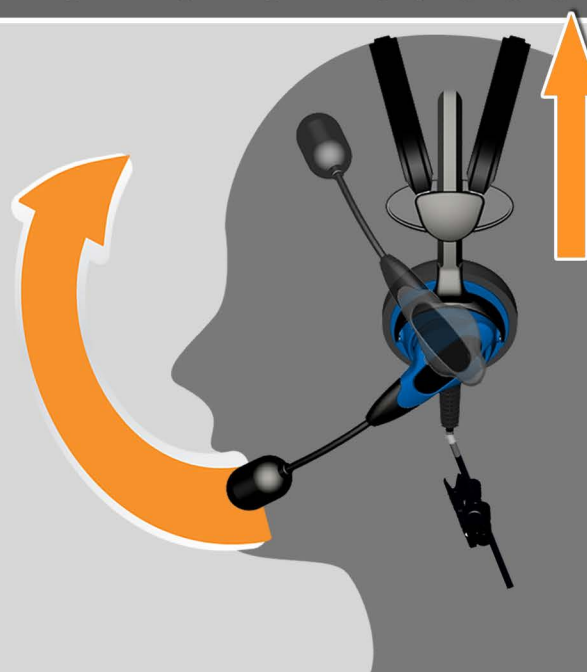
Insert device with button controls facing out and Operator button on top



5 Detach cable clips

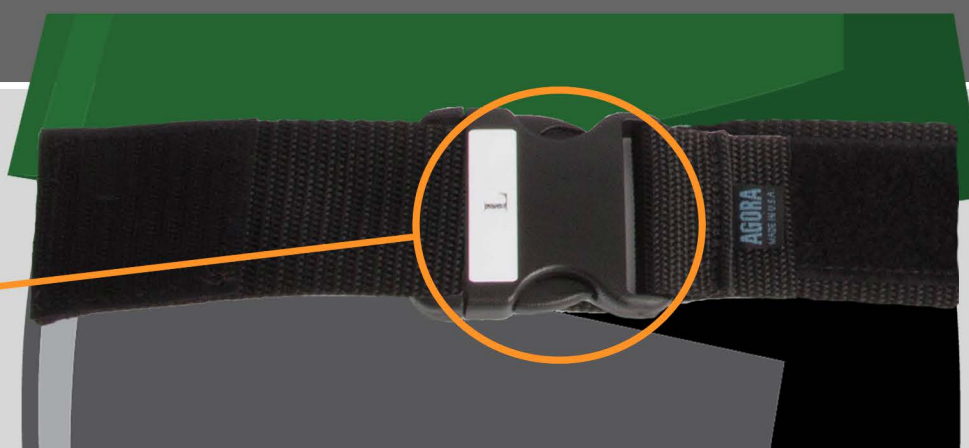


6 Remove headset



7 Remove belt

Release buckle



END A SHIFT - Wireless headset

1 Power off device

Press and hold Play/Pause until LED rotates red



2 Slide device out of holster

Talkman A730

Pull device away from you, sliding along clip



Talkman A710 or A720

Open Velcro® and slide device out

- OR -



3 Insert into slot

Insert device with button controls facing out and Operator button on top



4 Power off headset



5 Remove battery

Squeeze battery release buttons



6 Place in charger



7 Remove belt

Release buckle

